

Spare Parts Manual



Weka DK16 Drill Motor



3-speed Diamond Core Drill DK16

Oil-bath lubrication
Safety clutch
Levelling device
Motor protection and soft start
by means of intellitronic
Especially powerful motor



Technical Data:

Nominal Power (W)	2000
Output Power (W)	1340
Load Speed (1/min)	900/1900/3900
Length (mm)	350
Weight (kg)	5,9
Drilling Ø in concrete approx	
in drill stand (mm)	20 - 160
hand held (mm)	20 - 100
Tool fixture	G 1/2"
Type DK1203	1 1/4" + G 1/2"
Mounting Neck Ø (mm)	60



WEKA professional electric drills offer a high quality standard combined with a maximum in efficiency. They are designed for permanent and professional operation. They are designed for steady and professional use and achieve a high quality level. In Europe, USA and Asia it is used from drilling and sawing companies, but also from craftsmen, who prefer a high-quality product.

DK 12 / DK 16 - universal diamond core drilling machine which can be fixed in a drillstand or used as a hand held drill.

All versions offer the following features.

3 - speed gear - Large drilling range (see tech. Data) with easy speed adjustment to each hole diameter.

Oil-bath lubrication - Optimal gear lubrication for high efficiency and durability.

Overload clutch - Protection for operator as well as for machine and tools against mechanical overloads. An indispensable safety element for hand operated core drills.

Intellitronic - the new electronic system starts the motor by means of a micro controller softly and thus avoids a too high start current. When exceeding the over current threshold the electronic is showing this by a pulsating of the motor. If the operator now decreases the feed power, the motor works normal again. If the operator does not decrease the feed power the electronic switches the motor off after some seconds. After this action the motor can be started immediately. It is not required to wait a time period before starting again like on a thermal motor overload switch. Thus the Intellitronic avoids overload conditions and increases safety, the operators comfort and the motors life time.

Leveling aid - Two integrated levels enable exact horizontal and vertical working positioning.

Metal Casing - In relation to plastic cases the aluminum case of WEKA drills is mechanically and thermally more stable and durable.

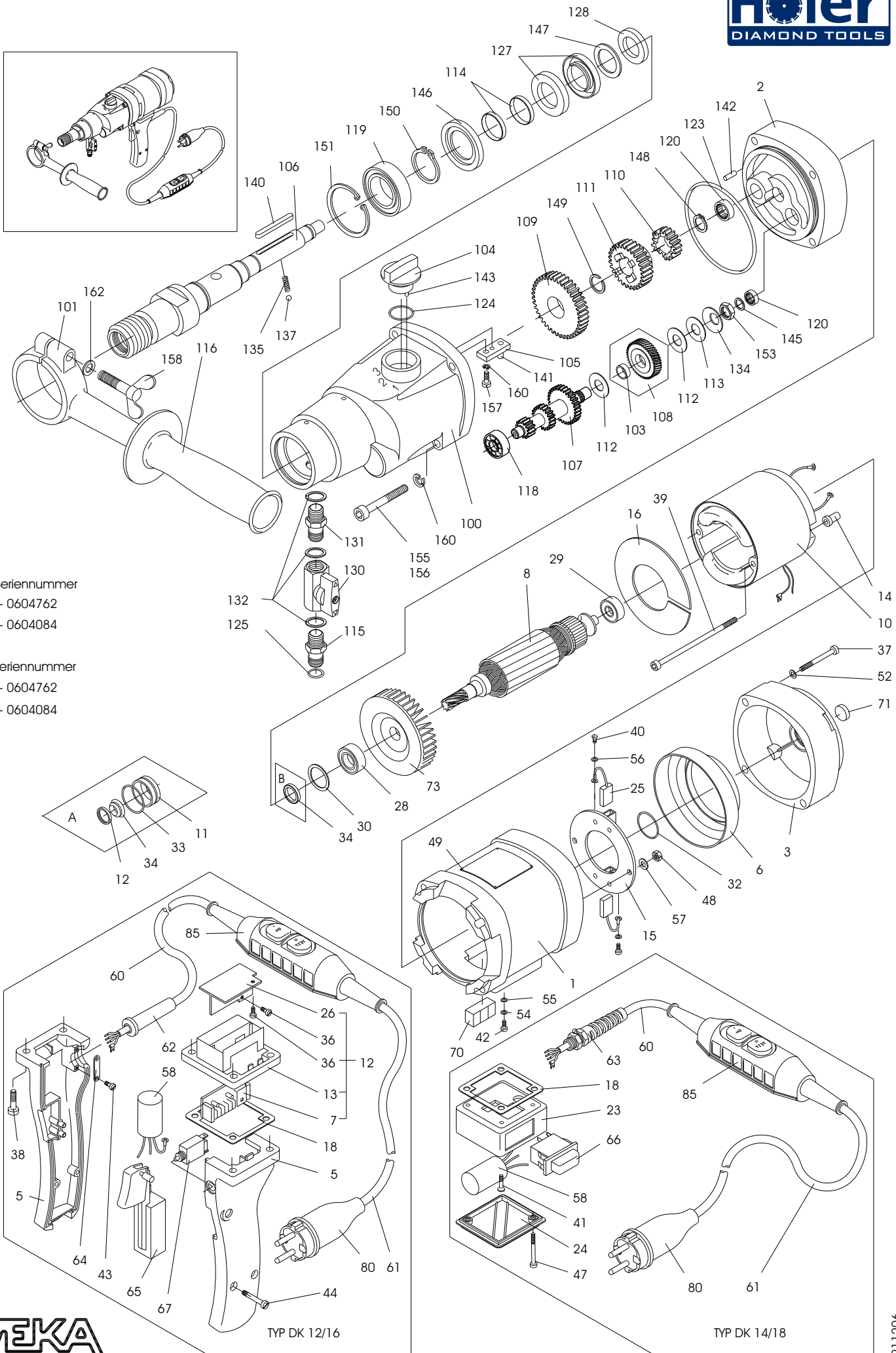
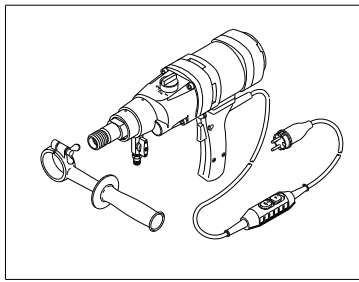
WEKA and Environment - WEKA electric tools are mainly made of steel and aluminum. Plastics are only used if it is unavoidable. Sandwich material is not used. WEKA electric tools are durable. Scrap-mature machines will be taken to pieces completely and the material is separated. Therefore the machines are 95% recyclable.

Electrical Safety - The DK 12 / DK 14 / DK 16 / DK 18 correspond to the regulations of the European directives as well as to the European standard EN 50144-2-1 respectively EN 61029-1. They are designed in double insulation with additional earth wire.



0800 224 653
www.holer.co.nz
info@holer.co.nz

DIAMANT-KERNBOHRMASCHINE TYP DK 12/14/16/18



TYP DK 12/16

TYP DK 14/18

FIG	NO	DESCRIPTION	STANDARD	TYPE	PART NO
1	1	Motor case			DK10101
2	1	Intermediate Flange			DK10102-1
3	1	Motor Top Hood w. Insulation Ring			DK10103
5	1	Switch Handle	230 V	DK12/16	DK12105
	1	Switch handle	110 V	DK12/16	DK12105/11
6	1	Insulation Ring			DK10106
7	1	Electronic Module	230V	DK12/14	DK10510
	1	Electronic Module	110V	DK12/14	DK10510/11
	1	Electronic Module	230V	DK16/18	DK16510
	1	Electronic Module	110V	DK16/18	DK16510/11
8	1	Armature with Fan and Bearings	230V	DK12/14	DK10108-1
	1	Armature with Fan and Bearings	110V	DK12/14	DK10108/11-1
	1	Armature with Fan and bearings	230V	DK16/18	DK16108-1
	1	Armature with Fan and bearings	110V	DK16/18	DK16108/11-1
10	1	Field	230V	DK12/14	DK10109
	1	Field	110V	DK12/14	DK10109/11
	1	Field	230V	DK16/18	DK16109
	1	Field	110V	DK16/18	DK16109/11
	1	Exchange Seal Bush			DK10113-1
12	1	Electronic module completely sealed	230V	DK12/14	DK10520
	1	Electronic module completely sealed	110V	DK12/14	DK10520/11
	1	Electronic module completely sealed	230V	DK16/18	DK16520
	1	Electronic module completely sealed	110V	DK16/18	DK16520/11
13	1	Electronic Case	230V		DK10135
14	2	Field screw insulating sleeve			DK10116
15	1	Brush Holder Disc	230V		DK10117
	1	Brush HolderDisc	110V		DK10117/11
16	1	Air Conducting Disc			DK10118
18	1	Terminal Case Packing			DK10122
23	1	Terminal Case		DK14/18	DK14130
24	1	Terminal Case Cover		DK14/18	DK14135
25	2	Carbon Brush	230 V		DK10125
	2	Carbon Brush	110 V		DK10125/11
26	1	Cooling Profile			DK10140
28	1	Ball Bearing			6060011
29	1	Ball Bearing			6060002
30	1	Compensation Washer			2628171
32	1	O-Ring	RDR26x2,5		4526025
34	1	Rotary Shaft Seal	RWD12x24x7		5012247
36	2	Th. Roll. Cheese Head Screw	M4x6		0504006
37	4	Hex. Soc. Head Screw	M5x35		0105035
38	4	Hex. Soc. Head Screw	M5x25	DK12/14	0205025
39	2	Fill. Head Screw	M4x100		0204100
40	2	Fill. Head Screw	M3x5		0203005
41	1	Countersunk Head Screw	M5x16	DK14/18	0405016
42	1	Sl. Pan Head Screw	M4x6		0304006
43	2	Pan Head Tapping Screw		DK12/14	0539095
44	2	Pan Head Tapping Screw		DK12/14	0539019
47	2	Raised Cheese Head Screw	M5x50	DK14/18	0205050
48	2	Hexagon Nut	M4		1004000
49	4	Round Head grooved Pin	2,3x4		2223004
52	4	Locking Washer	SM5		1805000
54	1	Curved Spring Washer	A4		1804137
55	1	Medium Washer	4,3x8x0,5 Ms		1804433
56	2	Medium Washer	3,2x6x0,5 Ms		1803433
57	2	Medium Washer	4,3x9x1 Ms		1804125
58	1	Interference Suppression Capacitor			DK10130
60	1	Cord G1,5x1,5	for PRCD		8715152
61	1	Cord G1,5x2,3	for PRCD		8723151
	1	Cord G1,5x3,8	for CEE plug		8738151
	1	Cord G2,5x3,8	110V	DK16/18	8738251
	1	Cord 3AWG14x4	for USA		8740141
62	1	Cord Sleeve		DK12/16	8701000
63	1	Cord Gland		DK14/18	8804020
64	1	Cord Clamping Piece		DK12/16	8800010
65	1	Motor Switch		DK12/16	8015212
66	1	Motor Switch	230 V	DK14/18	8015014
	1	Motor Switch	110 V	DK14/18	8015514
67	1	Motor Protective Switch	110 V	DK12/16	8010615
70	1	Tube Water-Level			7510029
71	1	Tin Water-Level			7500015
73	1	Fan			DK20105
80	1	Mains Plug	16 A		8016013
	1	Mains Plug CEE-16A-1h			8016001
85	1	PRCD Inline Protector	10 mA	230 V	8400010
	1	PRCD Inline Protector	10 mA	110 V	8400110
	1	Adhesive Sticker			DK20620

FIG	NO	DESCRIPTION	STANDARD	TYPE	PART NO
100	1	Gear Box			DK10201
101	1	Clamp Ring		DK12/16	DK12202
103	1	Bearing Socket			DK10221
104	1	Gear Change Grip			DK10203
105	1	Gear Change Lever		DK12/14	DK20205
	1	Gear Change Lever		DK16/18	DK30205
106	1	Drilling Spindle cpl. with Pos. 114,135,137, Tool Thread G 1/2"			DK10206
	1	Tool Thread 1 1/4" + G 1/2"			DK10206.3
	1	Tool Thread 32 mm square			DK10206.4
107	1	Pinion Shaft		DK12/14	DK10208
	1	Pinion Shaft		DK16/18	DK16208
108	1	Clutch Wheel			DK12209
109	1	Gear Wheel 1		DK12/14	DK10212
	1	Gear Wheel 1		DK16/18	DK16212
110	1	Gear Wheel 3		DK12/14	DK10213
	1	Gear Wheel 3		DK16/18	DK16213
111	1	Slide Gear Wheel		DK12/14	DK10214
	1	Slide Gear Wheel		DK16/18	DK16214
112	2	Brake Disk			DK10218
113	1	Pressure Disk			DK10219
114	2	Protective Sleeve			DK10220
115	1	Quick Connect Nipple			DK20225
116	1	Handle		DK12/16	8900014
118	1	Ball Bearing	629		6062900
119	1	Ball Bearing	6005 2RS		6060052
120	2	Needle Bush	HK1010		6310100
123	1	O-Ring	RDR78x2		5578002
124	1	O-Ring	RDR20x3		5520003
125	1	O-Ring	RDR11x2,5		5511025
127	2	Rotary Shaft Seal	AD24x40x7		5024407
128	1	Rotary Shaft Seal	AD22x35x7		5022357
130	1	Ball Valve	G1/4"i/i		7014001
	1	Grip for Ball Valve			7014005
131	1	Double Nipple	G1/4"a		7014002
132	3	Sealing Ring	G1/4		7014003
134	1	Disk Spring			4028142
135	1	Pressure Spring	0,5x3,2x16		4305016
137	1	Ball	RB-4		2204000
140	1	Parallel Key	A5x5x40		3005040
141	1	Parallel Pin	5m6x15		2505015
142	1	Parallel Pin	4m6x10		2504010
143	1	Parallel Pin	3m6x16		2503016
145	1	Shim Ring	PS10x16x1		1910161
146	1	Supporting Ring			DK10204
147	1	Shim Ring	PS25x40x0,3		1925403
	1	Shim Ring for adjust the clutch	PS20x28x0,1		1920280
148	1	Retaining Ring	AV14		3514001
149	1	Retaining Ring	SW18		3618000
150	1	Retaining Ring	25x1,2		3525012
151	1	Retaining Ring	47x1,75		3447175
153	1	Hexagon Nut	BM12x1,5		1012015
155	1	Hex. Soc. Head Screw	M5x80		0105080
156	3	Hex. Soc. Head Screw	M5x50		0105050
157	1	Hex. Soc. Head Screw	M5x12		0105012
158	1	Wing Screw	M6x40	DK12/16	0506040
160	5	Locking Washer	SM5		1805000
162	1	Medium Washer	A 6	DK12/16	1806125
	1	Pointing Sticker			DK20620
	1	Gear Oil	160 ml		9012001
	1	Carrying Case		DK12/16	DK10810

Subject to change without notice



0800 224 653 - www.holer.co.nz - info@holer.co.nz

Nelson Head Office

PO Box 3464
65 Main Road
Richmond 7050

Phone: (03) 543 9750
Fax: (03) 544 0110

Auckland Branch

3a Cowley Place
Albany
North Shore 0632

Phone: (09) 415 2900
Fax: (09) 415 2902

Christchurch Branch

45a Parkhouse Road
Wigram
Christchurch 8042

Phone: (03) 348 7738
Fax: (03) 348 7728